

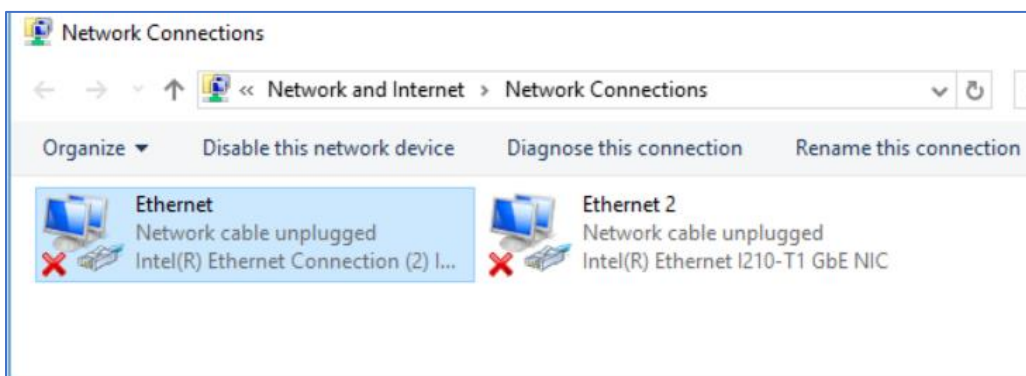


Agilent SureScan PC Network Card Configuration Instructions for Windows 10

To configure the network cards on a new or reimaged computer connected to a SureScan Instrument perform the following steps:

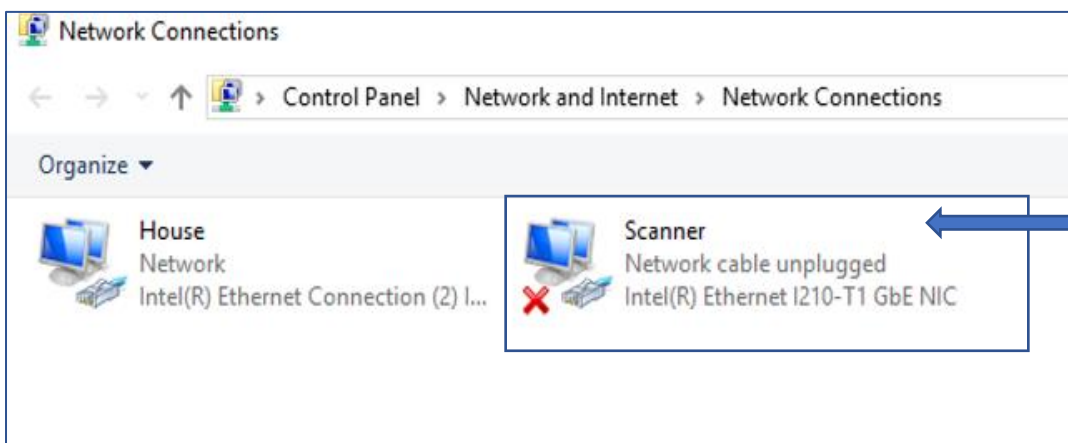
1. START () -> Settings () -> Network and Internet -> Change adapter options



2. Right Click on "Ethernet", select "Rename", change to "House" and press the enter key (this is the "onboard" Networking Interface Card (NIC))
3. Right Click on "Ethernet 2", select "Rename", change to "Scanner" and press the enter key (this is the "add on" NIC for interface with the scanner)

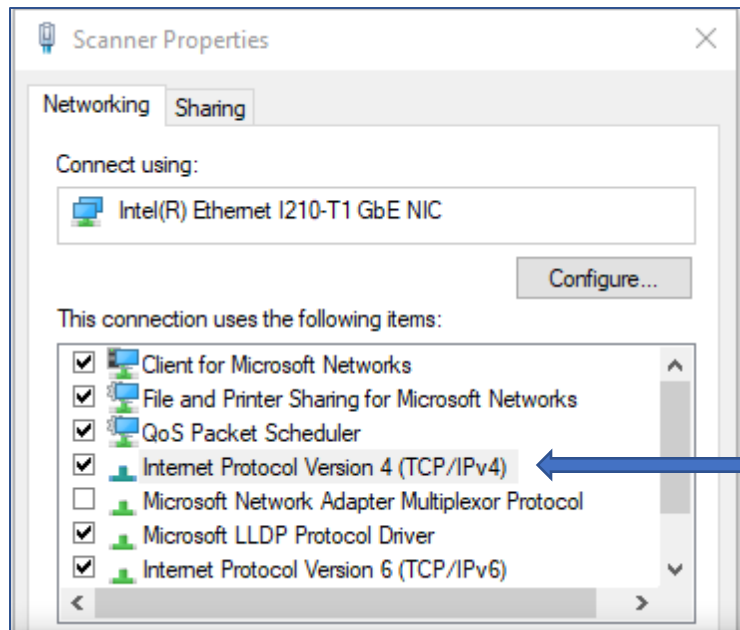
Note: Windows may identify the network interface cards differently as shown. Be sure the NIC that is renamed to "Scanner" is identified by: "Intel(R) Ethernet I210-T1 GbE NIC".

4. When complete, the Network Connections panel will be displayed as follows:

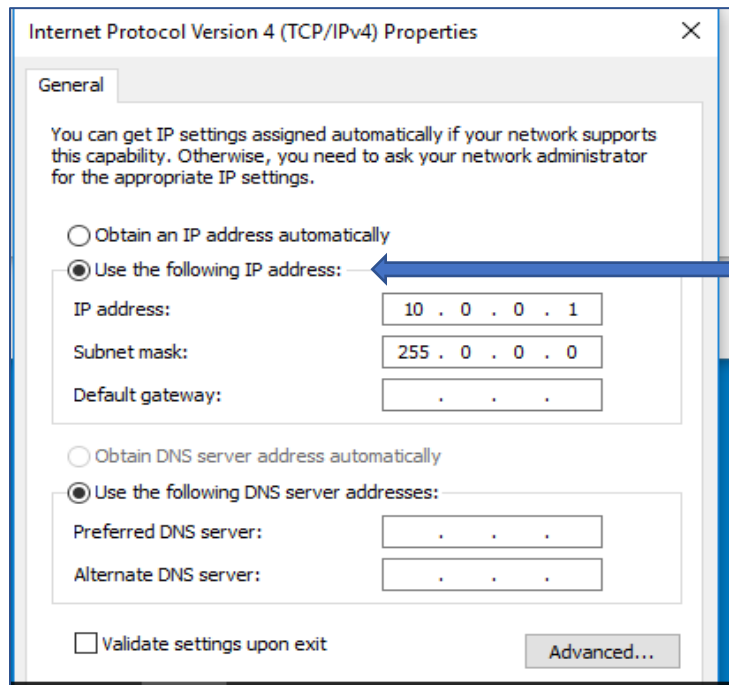


5. Right Click on the "Scanner" connection and select "Properties"

PC Network Card Configuration



6. Double click on "Internet Protocol Version 4 (TCP/IPv4)"



7. Select "Use the following IP address:"

8. Change the IP address to "10.0.0.1" and Subnet mask of "255.0.0.0" then click "OK"

9. Exit "Network and Internet" panel

The NIC interface for the scanner is now configured.